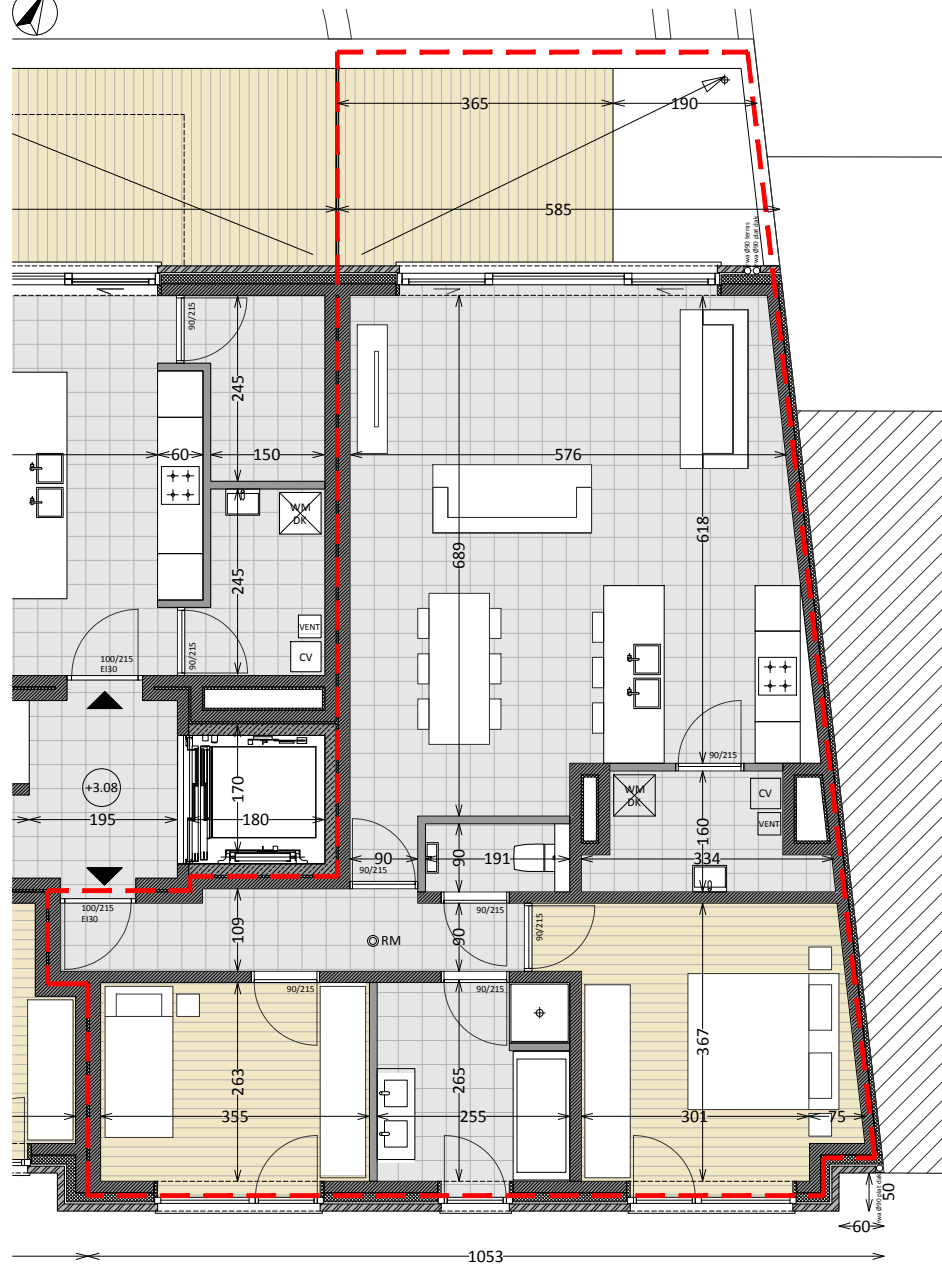


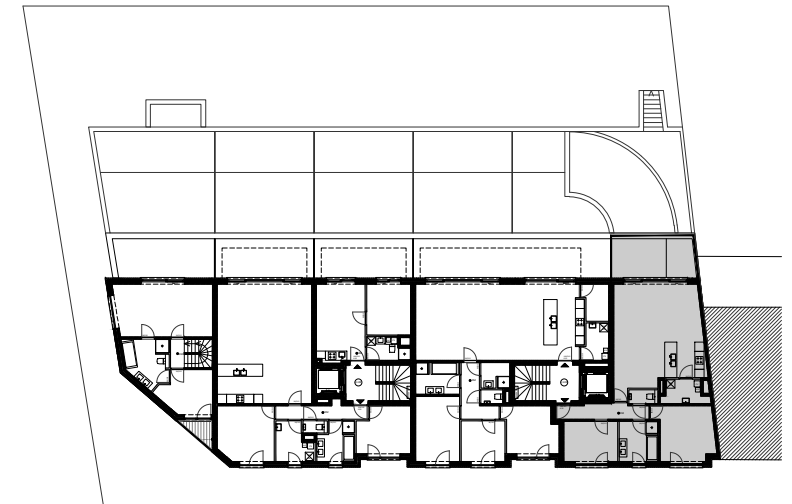
GRONDPLAN APPARTEMENT 09 schaal 1/100



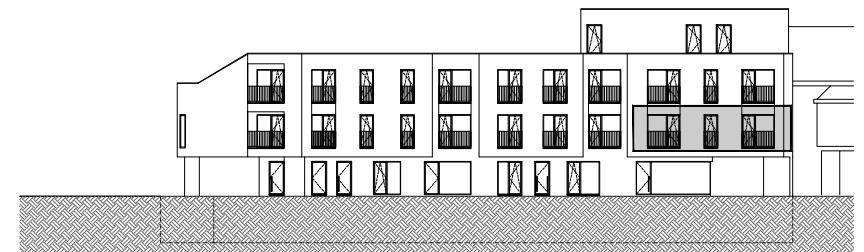
LIGGING APPARTEMENT 09 IN GEBOUW schaal 1/500



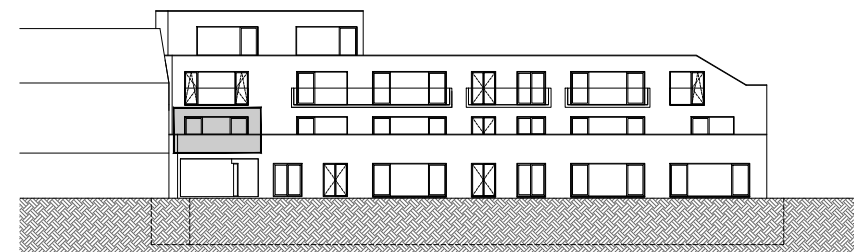
Grondplan 1ste verdieping



Straatgevel



Tuingevel



VIVIMMO  
Radioweg 19 - 3020 Herent  
016/58.15.81  
www.vivimmo.be



ARCHITECT BART RUYMEN  
info@bartruymen.be  
0489/50.14.33  
www.bartruymen.be

**ARCHITECT BART RUYMEN**  
BARTRUYMEN.BE

PROJECT TABOR

APPARTEMENT 09	Grondplan en inplanting
OPP. APPARTEMENT	92,27 m2
OPP. TERRAS	9,50 m2

TERVUURSESTEENWEG NR. 202-204, 3000 LEUVEN

DATUM	30/01/2017
SCHAAL	1/100 en 1/500
PLAN	1/2