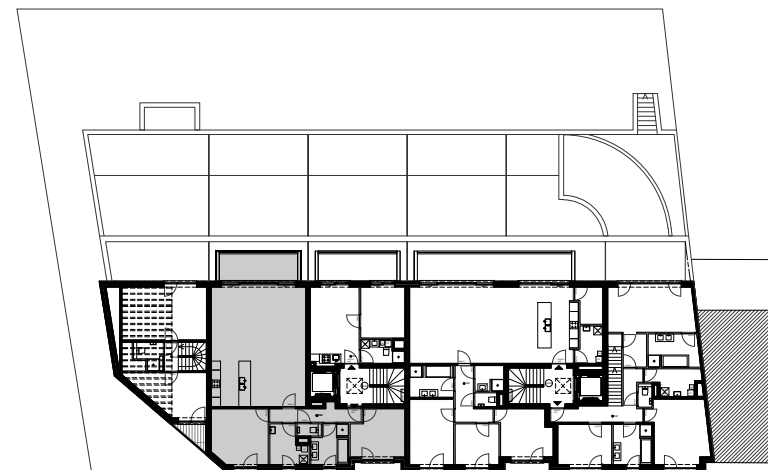
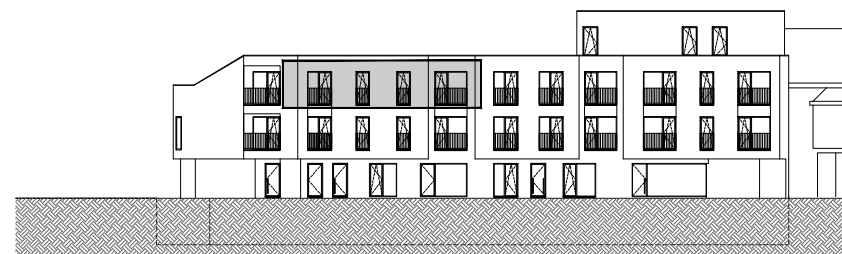


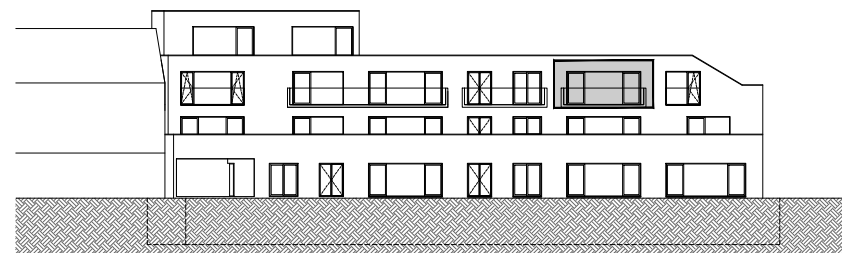
Grondplan 3de verdieping



Straatgevel



Tuingevel



VIVIMMO  
Radioweg 19 - 3020 Herent  
016/58.15.81  
www.vivimmo.be



ARCHITECT BART RUYMEN  
info@bartruymen.be  
0489/50.14.33  
www.bartruymen.be

ARCHITECT BART RUYMEN  
BARTRUYMEN.BE

PROJECT TABOR

APPARTEMENT 10  
OPP. APPARTEMENT  
OPP. TERRAS

Grondplan en inplanting  
103,84 m2  
11,20 m2

TERVUURSESTEENWEG NR. 202-204, 3000 LEUVEN

DATUM  
SCHAAL  
PLAN

30/01/2017  
1/100 en 1/500  
1/2