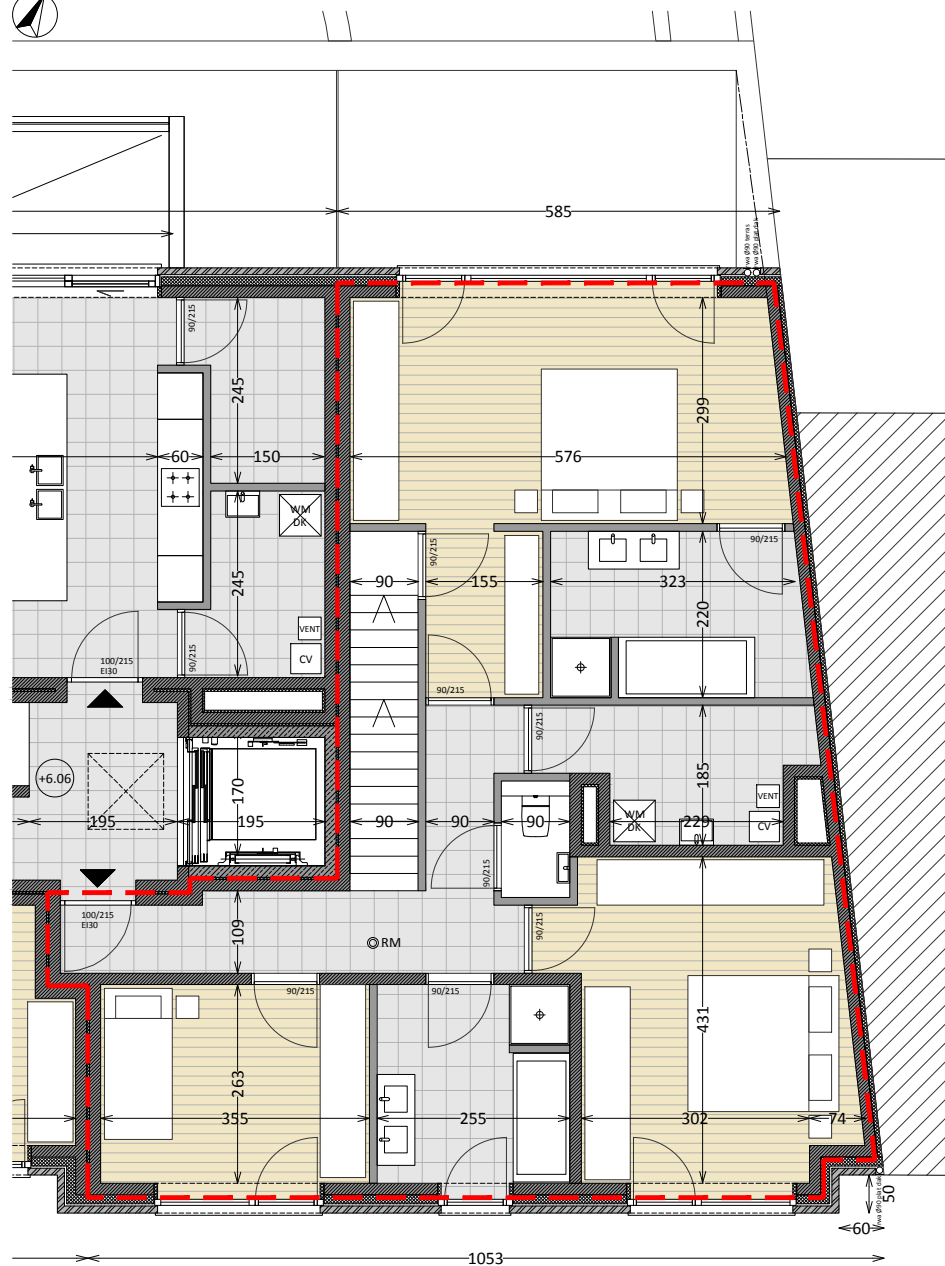


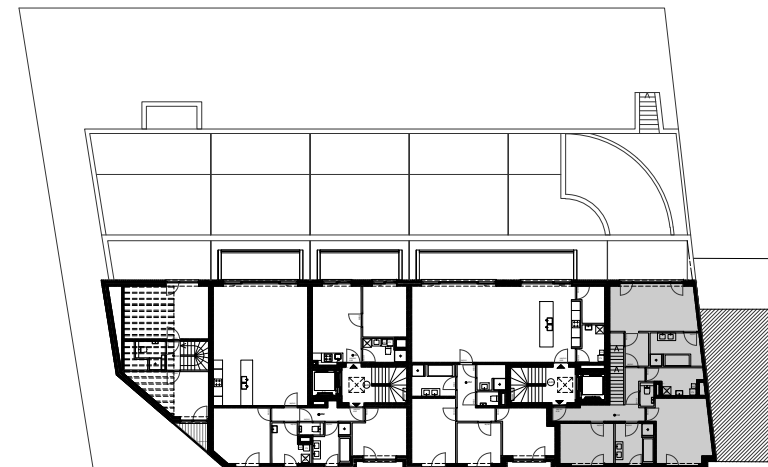
GRONDPLAN 2DE VERDIEPING DUPLEX 13 schaal 1/100



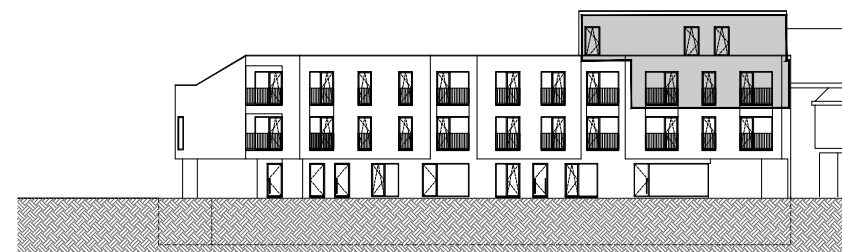
LIGGING DUPLEX 13 IN GEBOUW schaal 1/500



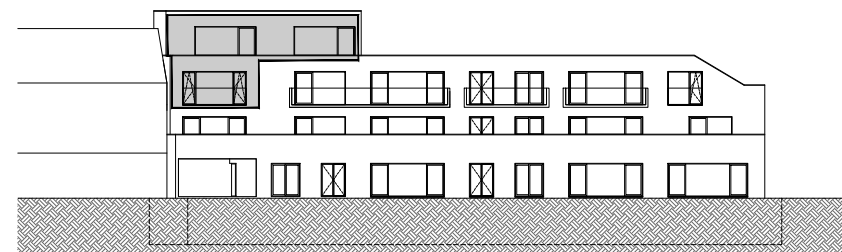
Grondplan 2de verdieping



Straatgevel



Tuingevel



VIVIMMO
Radioweg 19 - 3020 Herent
016/58.15.81
www.vivimmo.be



ARCHITECT BART RUYMEN
info@bartruymen.be
0489/50.14.33
www.bartruymen.be

ARCHITECT BART RUYMEN
BARTRUYMEN.BE

PROJECT TABOR

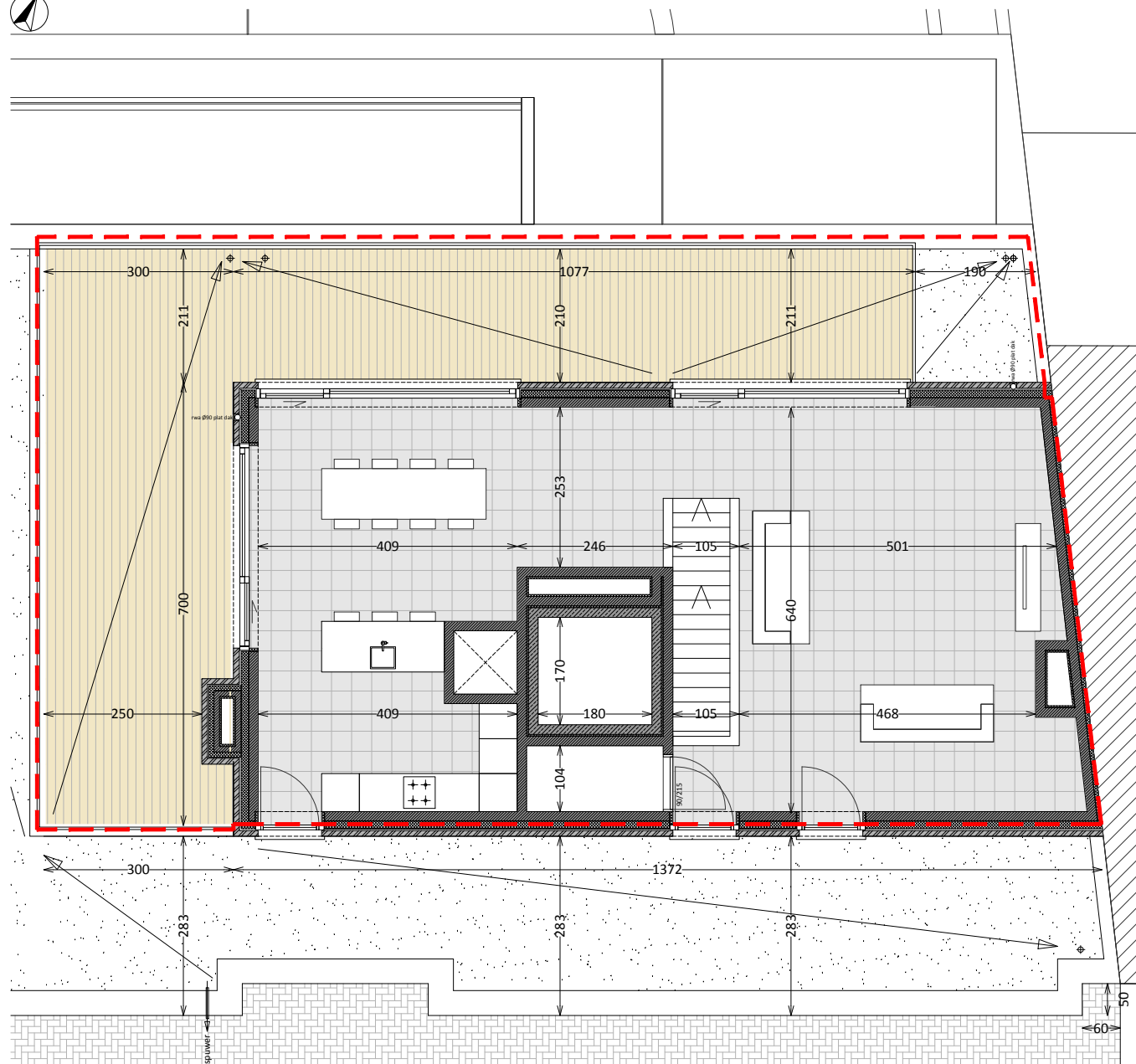
DUPLEX 13
OPP. APPARTEMENT
OPP. TERRAS

Grondplan 2de verdieping en inplanting
174,35 m2
57,60 m2

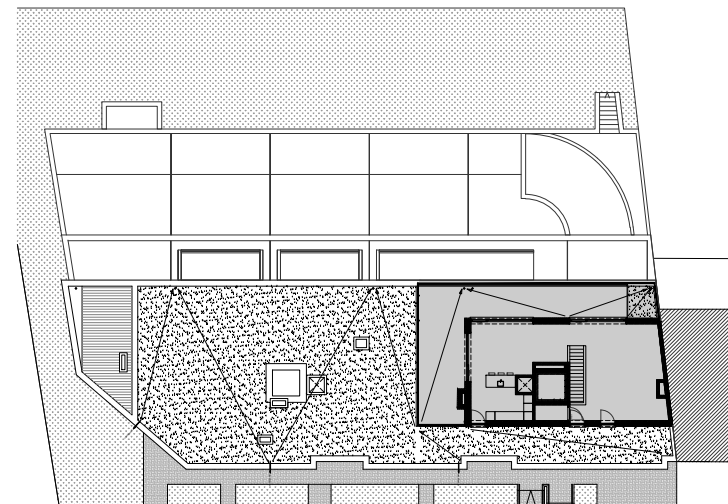
TERVUURSESTEENWEG NR. 202-204, 3000 LEUVEN

DATUM
SCHAAL
PLAN

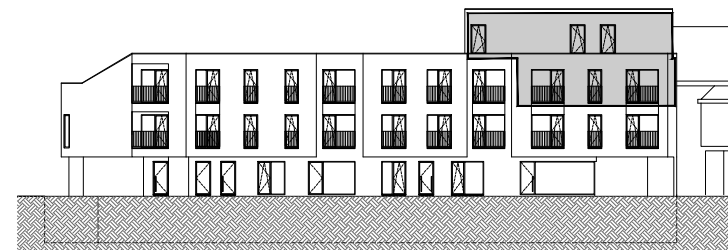
30/01/2017
1/100 en 1/500
1/3



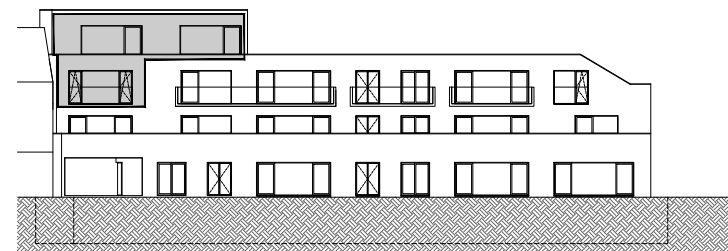
Grondplan 3de verdieping



Straatgevel



Tuingevel



VIVIMMO
Radioweg 19 - 3020 Herent
016/58.15.81
www.vivimmo.be



ARCHITECT BART RUYMEN
info@bartruymen.be
0489/50.14.33
www.bartruymen.be

ARCHITECT BART RUYMEN
BARTRUYMEN.BE

PROJECT TABOR

DUPLEX 13
OPP. APPARTEMENT
OPP. TERRAS

Grondplan 3de verdieping en inplanting
174,35 m2
57,60 m2

TERVUURSESTEENWEG NR. 202-204, 3000 LEUVEN

DATUM 30/01/2017
SCHAAL 1/100 en 1/500
PLAN 2/3